

Kaplan Aspect London, Covent Garden

Welcome to Kaplan Aspect London. Kaplan Aspect London has an exciting international community atmosphere, a comprehensive range of courses, excellent learning facilities and a fantastic location in a world-class capital city with something to suit all tastes.

London offers a vibrant night life, stunning architecture, beautiful parks, international cuisine and the finest museums and galleries. With its fashionable clubs and bars and world-renowned theatres, few cities can offer visitors such a diverse range of things to see and do in one place.

Kaplan Aspect London is situated in a historic, listed building dating from the 18th century which has been fully refurbished and modernised. Located just a 5 minute walk from Covent Garden, the school really is in the heart of London.



Kaplan Aspect London



Kaplan Aspect London
3 - 4 Southampton Place
London
WC1A 2DA
United Kingdom



Kaplan Aspect schools are members of ENGLISH UK.

Accredited by the



Kaplan Aspect schools in the UK are accredited by the British Council.

School Facilities

Classrooms

There are 15 classrooms which are bright and comfortable. Each room can seat a maximum of 15 students. All rooms are complete with desks and chairs and a whiteboard. There are televisions, DVDs and overhead projectors available for lessons.

Multimedia and IT centre

There are 16 computers in the multimedia centre along with a vast collection of learning software for students to use. The multimedia centre is a great place to utilise technology to maximise your learning.

Library

The school has a well established library with text books, self-study materials, books, magazines, CDs and DVDs.

Student Lounge

The student common room is an attractive and welcoming room overlooking the garden. There are 4 computers which students can use for email whilst relaxing with friends. There are also vending machines which provide hot drinks, cold drinks and snacks. Kaplan Aspect London has free wireless connection so students can get online on their own laptop computers from anywhere in the school.

Cafeteria

The school doesn't have a cafeteria but there are many shops nearby where students can buy their lunches. Students can eat in the common room or on the patio outside in nice weather.

Sports facilities

The activities coordinator can help with organising outdoor sports events which usually take place in public parks and include football and tennis.

Gym facilities

Students are able to join the local gym for indoor sports and fitness training.

Activities/Social Programme

Kaplan Aspect arranges a full schedule of excursions and activities including excursions to the famous museums, clubbing evenings in Soho and West End theatre trips.



Kaplan Aspect students in a classroom



Multimedia room

Your first day

On the first day of your course you need to report to the school reception with your Kaplan Aspect documents, passport and two passport photos at 8.45am. Your first day will be a Monday unless there is a public holiday on the Monday, in which case your first day will be Tuesday.

Your course will begin with an all-day introduction that will include:

- A welcome talk by the Principal or Director of Studies
- A Placement Test to determine your English level
- Information about your classes
- Information about the school and area
- Information about internships
- An overview of school activities and excursions
- An introduction to the Multimedia Centre
- A tour of the school, including Kaplan Aspect facilities
- Completion of forms and collection of any outstanding payments

You will also receive information about your class schedule, classroom number, study level, elective course, and the hours you are to attend class. We will put you in the most suitable class for your level of English. Please bring a £25 book deposit and pen and paper for note-taking purposes.

Local Information

Transport - buses and trains

London has a very efficient public transport network of buses, trains and tubes. Daily, weekly and monthly Travelcards can be bought for cheaper travel around London. If your course is 14 weeks or longer you can get a 30% discount on your Travelcard. The school reception can give you a Student Travelcard application form.

Banks and Post Office

There are numerous banks and post offices in the immediate vicinity of the school. Post office boxes are red and located on many street corners.

Restaurants and cafés

London is renowned for excellent restaurants, cafés and pubs catering for all tastes and preferences. Many of these are within walking distance of the school.

Department stores and supermarkets

There are many supermarkets nearby which are often a good economical option for lunches. Oxford Street, with its many fashionable shops and department stores, is within walking distance of the school.

Telephone and Internet Café

There are public telephones within a 5-minute walk of the school. We advise students buy phone cards from the school reception for long distance calls and call in the evenings or on weekends as it is cheaper then. You can also buy UK SIM cards from reception to use in your mobile phone. Internet and email can be accessed in the common room via school computers or through your own laptop via the wireless hotspots.

Church/Mosque

There are churches of all religions and faiths close to the school. A list of these is posted at the school.

Cost of Living

Approximate prices in GBP

Sandwiches :	£2-3.00	Tickets	
Green Salad:	£3.50	Cinema:	£8.00
Beef Salad:	£7.50	Bus:	£2.00
Tuna Pasta:	£4.00	Underground	
Chicken Pasta:	£3.75	per week (approx):	£30.00
Hamburger:	£2.50		
Fruit Salad:	£3.00		
Pizza - Slice:	£2.00		
Tea / Coffee:	£2.00		
Hot Chocolate:	£2.00		
Fish and Chips:	£5.50		
Spaghetti:	£6.00		
Lasagne:	£7.00		
Orange Juice:	£2.00		



Patio garden



Reception



Kaplan Aspect students



Tower Bridge

Sample Activities Schedule

Please note that this is a sample programme and activities may change. See a current activities schedule at: www.kaplanaspect.com

Week one

Monday	Welcome drinks in a traditional pub
Tuesday	The British Museum
Wednesday	Fun and Dance at the Kaplan Aspect Party
Thursday	Tate Modern Art Museum
Friday	Clubbing in Soho
Saturday	Excursion to Bath

Week two

Monday	National Portrait Gallery
Tuesday	Shopping in Covent Garden
Wednesday	West End Theatre Trip
Thursday	Cruise on the Thames to Hampton Court
Friday	Curry night in Brick Lane
Saturday	Picnic on Hampstead Heath

Some activities are not free and students will need to pay the relevant amount (such as entry fees) in order to participate.

The Team

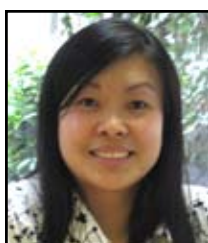
Kaplan Aspect Covent Garden


Principal:

Rachel Matthews
Rachel is responsible for the overall running of the School. She can help you with any general questions you have about the School's programmes and services.


Director of Studies:

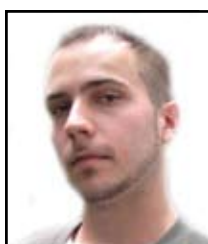
Lorna Haizelden
Lorna manages the teaching team and is responsible for the academic programmes and resources. She can help you if you have a question about your course or your studies.


Accommodation Officer:

Susan Mao
Susan is responsible for the homestay and residential accommodation services provided to students. She can give you advice about living in London and can also help you with any questions you have about your accommodation.


School Administrator:

Nora Maecke
Nora is the best person to speak to if you want to extend or upgrade your course. She can give you advice on future studies and other available courses. She also manages the registration of new students and is responsible for student services.


Activities Coordinator:

Alan Williams
As dedicated activities coordinator, Alan organises student events and excursions to ensure you can make the most of your free time.


Senior Teacher:

Craig Sargent
Speak to Craig if you have any questions on resources.

Course Information

Courses and Services

- Vacation English
- General English
- Intensive English
- English for Business
- IELTS Preparation (Supplementary)
- General Academic Year
- Intensive Academic Year
- General Academic Semester
- Intensive Academic Semester
- University Placement
- Internships
- OPUS Paid Work and Study

Sample Timetables

This is an example timetable. Class times are subject to change and you should use this timetable as an example of what type of structure to expect.

Morning timetable

08.30 - 10.00
10.00 - 10.15
10.15 - 11.45
11.45 - 12.00
12.00 - 13.30

Afternoon timetable

Class	12.00 - 13.30	Class
Break	13.30 - 14.00	Break
Class	14.00 - 15.30	Class
Break	15.30 - 15.45	Break
Class	15.45 - 17.15	Class

Transfer Information

Kaplan Aspect transfers

Students should arrive at Heathrow, Gatwick, or Stansted Airports. A driver will meet students at the airport to help with transportation. Kaplan Aspect Transfer Service must be arranged in advance.

Independent Transfers

London Heathrow Airport to Central London

Underground

Piccadilly Line to Central London.

Departs every 2-3 minutes from 05.30 - 23.30hrs

Journey time: 50 mins approx

Bus

A1 Airbus from LHR Terminal 3 to London Victoria Coach Station.

Departs every 30 minutes from 05.45 - 23.00hrs

Journey Time: 1.10 hrs approx.

London Gatwick Airport to Central London

Train

Gatwick Express - South Terminal to London Victoria

Departs every 15 minutes from 05.50 - 00.50hrs,

then hourly from 01.35 - 05.20. Journey time 30 mins

Bus

Jetlink/Airlink from both terminals to London Victoria

Departs from 05.05, 06.40 then hourly until 20.20

Journey time: 1.05 hrs

Stansted/Luton Airport to Central London

Train

Stansted – Liverpool Street. Journey time: 41 minutes.

Luton – Kings Cross. Journey time: 30 minutes to 1 hr.

King's Cross Station to Central London

Underground

Next to International Terminal. 5 minutes to Central London on Northern Line.

Bus

No's. 1, 68, 188, 501, 502, 171 every 2-3 minutes to Central London. Price: £2.



Big Ben